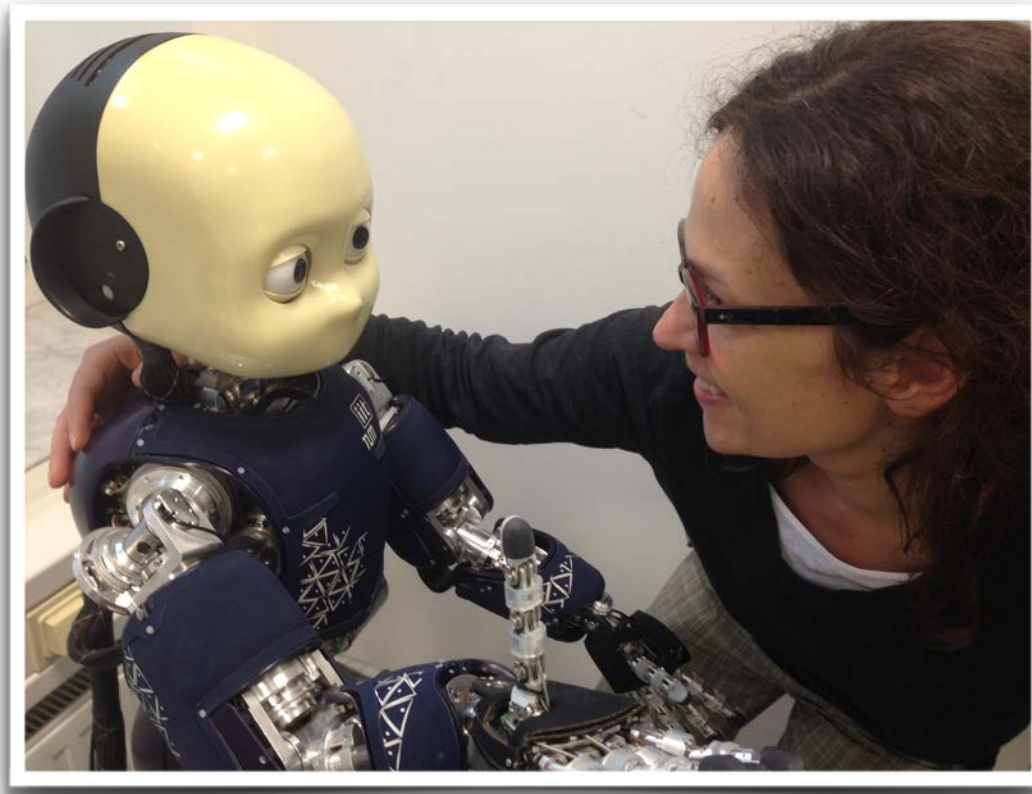


SOCIAL ATTUNEMENT IN SOCIAL COGNITIVE NEUROSCIENCE AND HUMAN-ROBOT INTERACTION



AGNIESZKA WYKOWSKA

“Social cognition in human-robot interaction” research line
Istituto Italiano di Tecnologia
agnieszka.wykowska@iit.it



European Research Council
Established by the European Commission

EMPATHISING WITH OTHERS

EMPATHISING WITH OTHERS

Empathy: “the capacity to **share the feelings** of others (...)
Empathy makes it possible to **resonate** with others’
feelings” (Singer & Klimecki, 2014)

EMPATHISING WITH OTHERS

Empathy: “the capacity to **share the feelings** of others (...) Empathy makes it possible to **resonate** with others’ feelings” (Singer & Klimecki, 2014)

“Empathy has been defined as an **affective response** stemming from the understanding of another’s emotional state” (Eisenberg, et al., 1991, after Decety & Meyer, 2008)

CAN ROBOTS EMPATHISE WITH US?

CAN ROBOTS EMPATHISE WITH US?

Ability to empathise would require from robots to have affective states, similar to ours. Perhaps they would also need similar physiological mechanisms.

CAN ROBOTS EMPATHISE WITH US?

Ability to empathise would require from robots to have affective states, similar to ours. Perhaps they would also need similar physiological mechanisms.

Present AI and robotics not there yet....

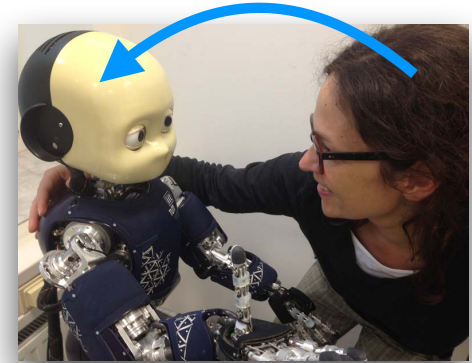
WHAT CAN WE DO?

For the time being we can:

WHAT CAN WE DO?

For the time being we can:

(1) detect social and emotional signals of the human (behavioural and also maybe (neuro-)physiological?)

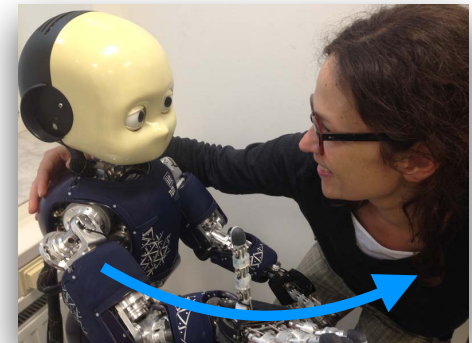
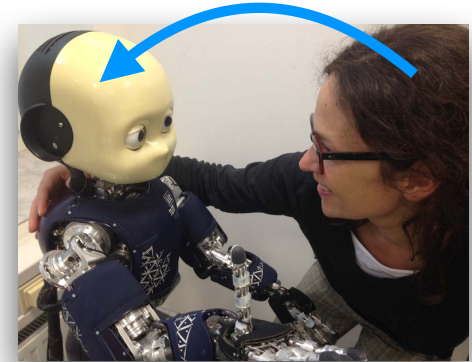


WHAT CAN WE DO?

For the time being we can:

(1) detect social and emotional signals of the human (behavioural and also maybe (neuro-)physiological?)

(2) respond by **imitating** behavioural “empathetic” responses based on knowledge about how a human would behave in such circumstances



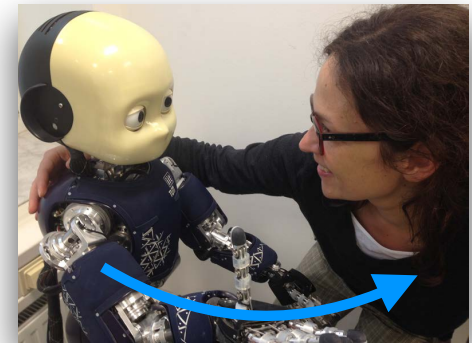
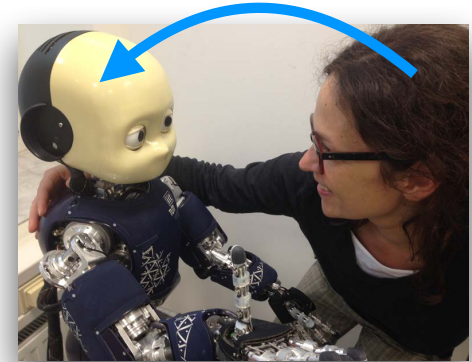
WHAT CAN WE DO?

For the time being we can:

(1) detect social and emotional signals of the human (behavioural and also maybe (neuro-)physiological?)

(2) respond by **imitating** behavioural “empathetic” responses based on knowledge about how a human would behave in such circumstances

This should create **social attunement**



SOCIAL ATTUNEMENT IN HRI

Attunement (*noun*): being or bringing into harmony: a feeling of being “at one” with another being.

SOCIAL ATTUNEMENT IN HRI

Attunement (*noun*): being or bringing into harmony: a feeling of being “at one” with another being.

Social attunement: an umbrella concept for various mechanisms of social cognition that the human brain uses in interactions with others. Example of these are:

SOCIAL ATTUNEMENT IN HRI

Attunement (*noun*): being or bringing into harmony: a feeling of being “at one” with another being.

Social attunement: an umbrella concept for various mechanisms of social cognition that the human brain uses in interactions with others. Example of these are:

- joint attention

SOCIAL ATTUNEMENT IN HRI

Attunement (*noun*): being or bringing into harmony: a feeling of being “at one” with another being.

Social attunement: an umbrella concept for various mechanisms of social cognition that the human brain uses in interactions with others. Example of these are:

- joint attention
- spatial perspective taking

SOCIAL ATTUNEMENT IN HRI

Attunement (*noun*): being or bringing into harmony: a feeling of being “at one” with another being.

Social attunement: an umbrella concept for various mechanisms of social cognition that the human brain uses in interactions with others. Example of these are:

- joint attention
- spatial perspective taking
- emotional synchronisation

SOCIAL ATTUNEMENT IN HRI

Attunement (*noun*): being or bringing into harmony: a feeling of being “at one” with another being.

Social attunement: an umbrella concept for various mechanisms of social cognition that the human brain uses in interactions with others. Example of these are:

- joint attention
- spatial perspective taking
- emotional synchronisation
- communicative gestures

HOW?

Through well-controlled experiments and cognitive neuroscience methods — replicable and generalisable results



HOW?

HOW?

1. Identifying specific human behavioural parameters in **well-controlled experiments**, methods of cognitive neuroscience

HOW?

1. Identifying specific human behavioural parameters in **well-controlled experiments**, methods of cognitive neuroscience
2. Implementing controllers of the robot to copy human behaviours — **imitation** of empathy

HOW?

1. Identifying specific human behavioural parameters in **well-controlled experiments**, methods of cognitive neuroscience
2. Implementing controllers of the robot to copy human behaviours — **imitation** of empathy
3. Testing the attunement level ("**attunement test**") - testing social cognition and engagement in **well-controlled experiments**, methods of cognitive neuroscience

HOW?

1. Identifying specific human behavioural parameters in **well-controlled experiments**, methods of cognitive neuroscience
2. Implementing controllers of the robot to copy human behaviours — **imitation** of empathy
3. Testing the attunement level ("**attunement test**") - testing social cognition and engagement in **well-controlled experiments**, methods of cognitive neuroscience
4. Using results of step 3 to improve the quality of empathy and attunement

EXAMPLE RESEARCH



Pre-programmed
vs.
Human pre-recorded



Results:

- Joint attention influenced by perceived humanness
- Lack of awareness of the correct hint

TAKE-HOME MESSAGES

TAKE-HOME MESSAGES

1. Empathy is an element of social attunement

TAKE-HOME MESSAGES

1. Empathy is an element of social attunement
2. Imitating empathy can be achieved by studying human behavioural markers of empathy

TAKE-HOME MESSAGES

1. Empathy is an element of social attunement
2. Imitating empathy can be achieved by studying human behavioural markers of empathy
3. This requires cognitive neuroscience methods and well-controlled experiments

TAKE-HOME MESSAGES

1. Empathy is an element of social attunement
2. Imitating empathy can be achieved by studying human behavioural markers of empathy
3. This requires cognitive neuroscience methods and well-controlled experiments
4. This approach of fundamental science is also beneficial for industrial products

TAKE-HOME MESSAGES

1. Empathy is an element of social attunement
2. Imitating empathy can be achieved by studying human behavioural markers of empathy
3. This requires cognitive neuroscience methods and well-controlled experiments
4. This approach of fundamental science is also beneficial for industrial products

THANK YOU!

agnieszka.wykowska@iit.it



European Research Council
Established by the European Commission